

Cambodia

Disability-Inclusive Disaster Risk Reduction (DiDRR) Handbook



Inclusive Tools Training



Disaster



Warning Sign



Training



Safe



Quick Exit



Risk Reduction

Table of Contents

Authors	4
Section 1:Introduction	4
Section 2:Principles	7
Definition	7
Vulnerability	8
1. Social Media	8
2. Inclusion	9
3. Universal Design	9
Accessibility	10
Section 3:How to use the accessible Handbook	10
A.) Role and Resources	10
B.) Materials	11
Target Participants	11
Framework of Training	12

Author

Miss Keorithe Um

Official Staff, Department of Administration and Human Resources Management National Social Assistance Fund (NSAF) Ministry of Social Affairs, Veterans and Youth Rehabilitation

Section 1 : Introduction

Table 1. Summary Natural Disasters in Cambodia, 1987-2007

	No. of Events	Killed	Injured	Homeless	Population Affected	Damage USD\$ (in 000's)
Flood	12	1125	53	275805	9514614	327100
Avg.per event		94	4	22984	792885	27258
Drought	5	0	0	0	6550000	138000
Avg.per event		0	0	0	1310000	27600
Epidemic	8	788	0	0	413570	0
Avg.per event		99	0	0	51696	0

Source: EM-DAT: The OFDA/CRED International Disaster Database, www.em-dat.net - Université catholique de Louvain - Brussels - Belgium



Disaster Risk Reduction (DRR) is the process of reducing the risk of disaster to people and property. It involves a range of activities, such as identifying and assessing hazards, reducing vulnerability, and strengthening resilience. People with disability are more vulnerable to disasters caused by natural hazards than others (Hisamatsu, 2013; Kaiser et al., 2007; Tatsuki, 2012) and are less likely to be included in community disaster risk reduction (DRR) activities - creating profound inequity across the disaster risk management cycle. During disasters, people with disability are the first to be left behind and the last to be rescued and they are two-to-four times more likely to be or injured or die in disasters than others.



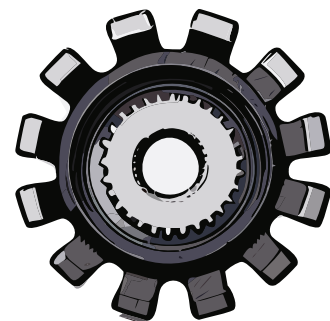
Multiple categories of social, environmental and demographic vulnerability intersect with disability (including unsafe or insecure housing, isolation, limited social support, stigma that causes people to be left behind and not helped) and often combine with secondary health conditions to place people with disability at significant risk during disasters. People with disability have the right to be active participants in decisions that affect them. To ensure community resilience, people with disability need to be included in disaster risk management but they have largely been excluded from frequently used community engagement methods designed to increase individual disaster self-reliance. This perpetuates inequity and increases vulnerability because their support needs in emergencies are not understood. In Cambodia, almost all disasters are flood and drought related disasters. Hence this link document will focus more specifically on flood risk management. However, principles of risk management involved for this can also be readily applicable to all disasters (or even man-made disasters like oil spills and terrorist attacks) with appropriate variations as applicable, essentially predetermined. Individuals with disabilities may have difficulty evacuating to safety during a disaster, especially if they have mobility impairments or rely on assistive devices. They may face the difficulties such as accessing food, water, and shelter during and after a disaster, communicating with emergency responders during a disaster and being more vulnerable to violence and abuse in the aftermath of a disaster.



Cambodia is one of the most disasters affected countries in all of South East Asia and the impact of these disasters is most felt in the rural areas where it is estimated that 80% of the poor reside (CSES, 2004). Over the last 10 years, Cambodia has been affected by a series of exceptional floods and by widespread but highly localized agricultural droughts. As a result, the government has become aware that without serious efforts in risk reduction, disasters will increasingly become a serious obstacle to the achievement of the country's development aspirations, particularly to its highest priority of poverty reduction.



Fortunately, in July 2022, Cambodia team was invited to participated in online course on DiDRR which is conducted by Asia-Pacific Development Center on Disability (APCD) and sponsored by Thailand International Cooperation Agency (TICA) and Japan International Cooperation Agency (JICA). In addition, the course continued to conduct onsite training on 5 – 11 February 2023 in Pathumthani and Bangkok, Thailand on “Strengthening Disability-Inclusive Disaster Risk Reduction in the ASEAN Region”. Frequency, the 2nd training course was also conducted on 9 – 22 July, 2023 in Phuket and Bangkok, Thailand under the title “Strengthening Disability-Inclusive Disaster Risk Reduction (DiDRR) in the ASEAN Region Course 2: Training of Trainers (ToT) on Disability-Inclusive Disaster Risk Reduction (DiDRR): Development of Recommendations and Handbook”. That is why this handbook is prepared as well as to respond for Disaster risk reduction which is essential for protecting the rights and lives of individuals with disabilities.



Section 2 : Principles

Definition



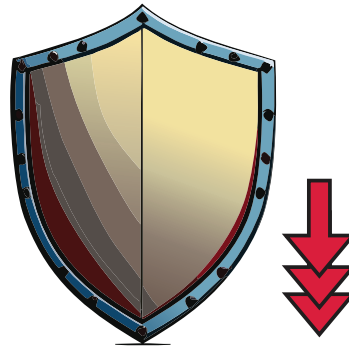
Flood: Extreme weather events such as storms or typhoons are not usually considered a major problem in Cambodia because the country is protected by surrounding mountain ranges. However, storms do occasionally affect the country with most of the storm-related damage caused by localized floods associated with heavy rain. Tropical storms can also affect the level of Mekong River flooding experienced on a given year. The storm incursions into the Mekong basin spread from the South China Sea towards the east and Southeast across Vietnam and the Southern China. Greatest damage occurs when these arrive during September and October when the seasonal discharge of the Mekong River is already high and a second significant peak to the annual flood is generated (MRC 2007).



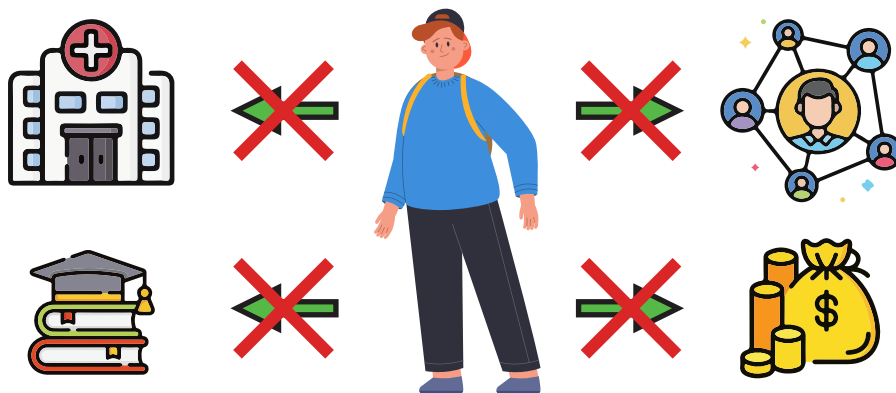
Drought: is considered a period of abnormal dry weather that causes serious hydrological imbalance in the area. Under a normal year, typical rainfall distribution from May to October and the heavy rainfall from August till mid-October with a dry spell for about 2 to 3 weeks in between July and August. In a year when this dry period is extended too long, an agricultural drought could occur in addition to the late rain and early end of rainy season.



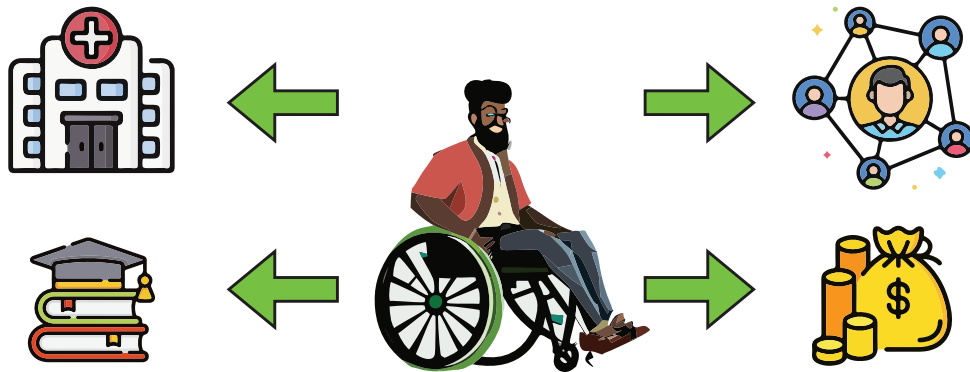
Disaster Risk Reduction: The conceptual framework of elements considered with the possibilities to minimize vulnerabilities and disaster risks throughout a society, to avoid (prevention) or to limit (mitigation and preparedness) the adverse impacts of hazards, within the broad context of sustainable development.



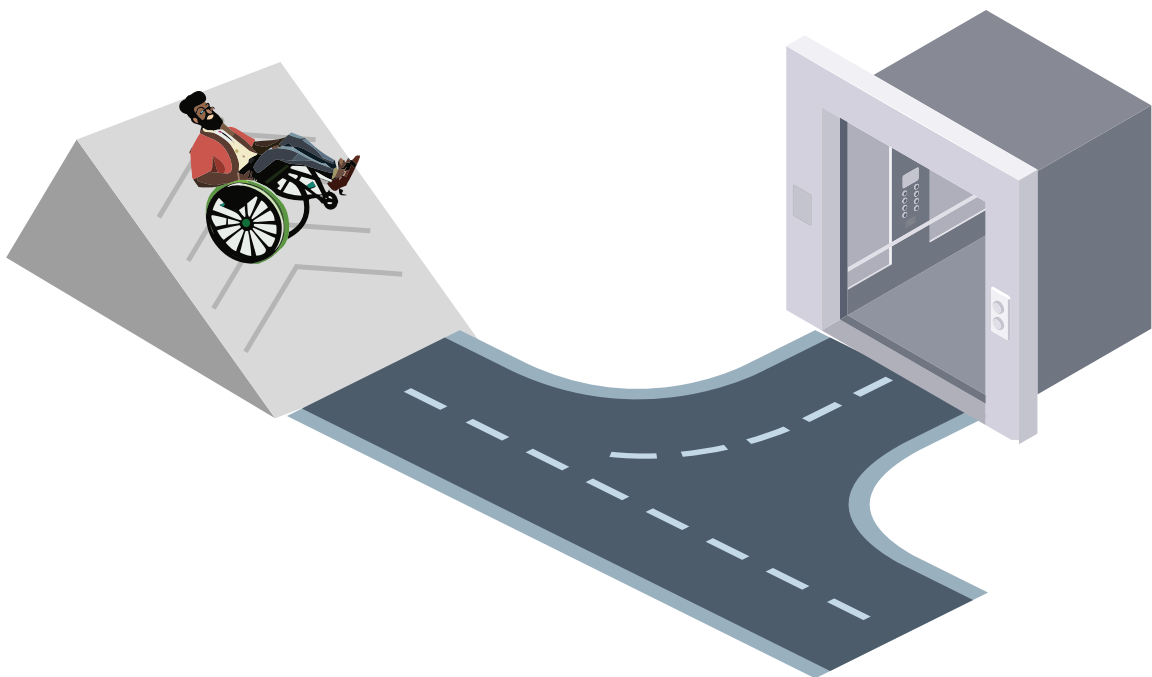
Vulnerability: The conditions determined by physical, social, economic and environmental factors or processes, which increase the susceptibility of a community to the impact of hazards.



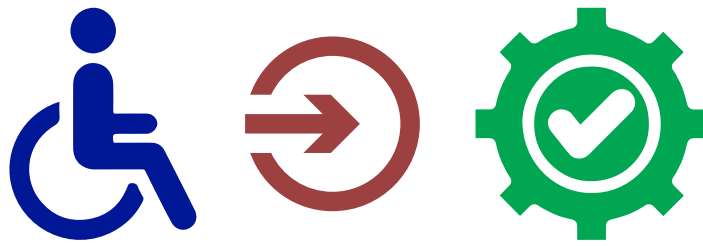
1. Social Model: The social model of disability says that disability is caused by the way society is organized, rather than by a person's impairment or difference. It looks at ways of removing barriers that restrict life choices for disabled people. When barriers are removed, disabled people can be independent and equal in society, with choice and control over their own lives.



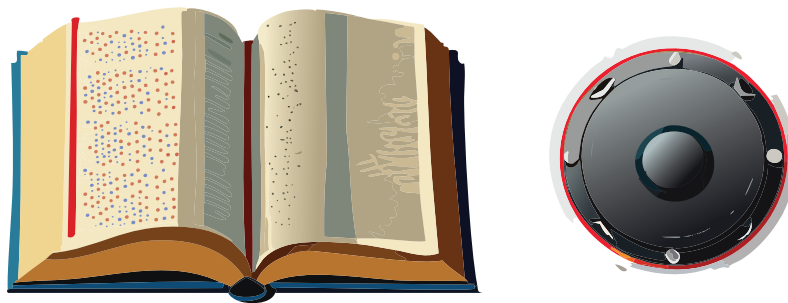
2. Inclusion: Including people with disabilities in everyday activities and encouraging them to have roles similar to their peers who do not have a disability is disability inclusion. This involves more than simply encouraging people; it requires making sure that adequate policies and practices are in effect in a community or organization. Inclusion should lead to increased participation in socially expected life roles and activities—such as being a student, worker, friend, community member, patient, spouse, partner, or parent.



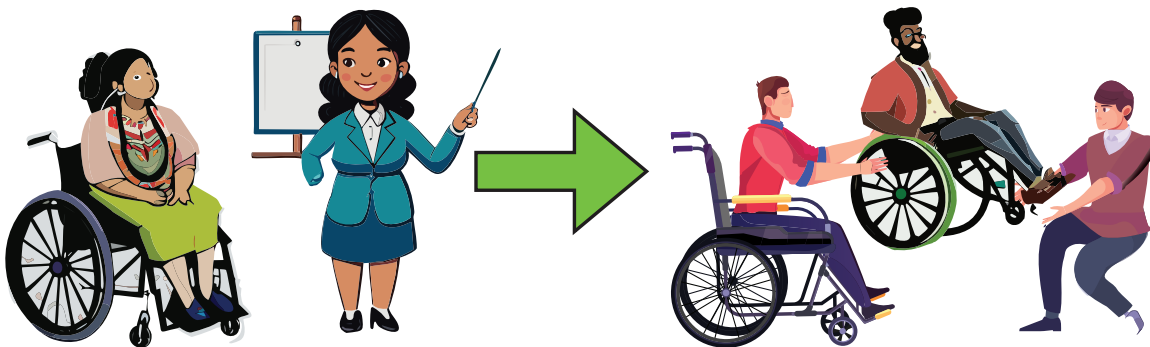
3. Universal Design: Universal design means planning to build physical, learning and work environments so that they are usable by a wide range of people, regardless of age, size or disability status. While universal design promotes access for individuals with disabilities, it also benefits others.



4. Accessibility: is when the needs of people with disabilities are specifically considered, and products, services, and facilities are built or modified so that they can be used by people of all abilities. Here are a few examples of accessibility: Parking spaces are close to entrances.

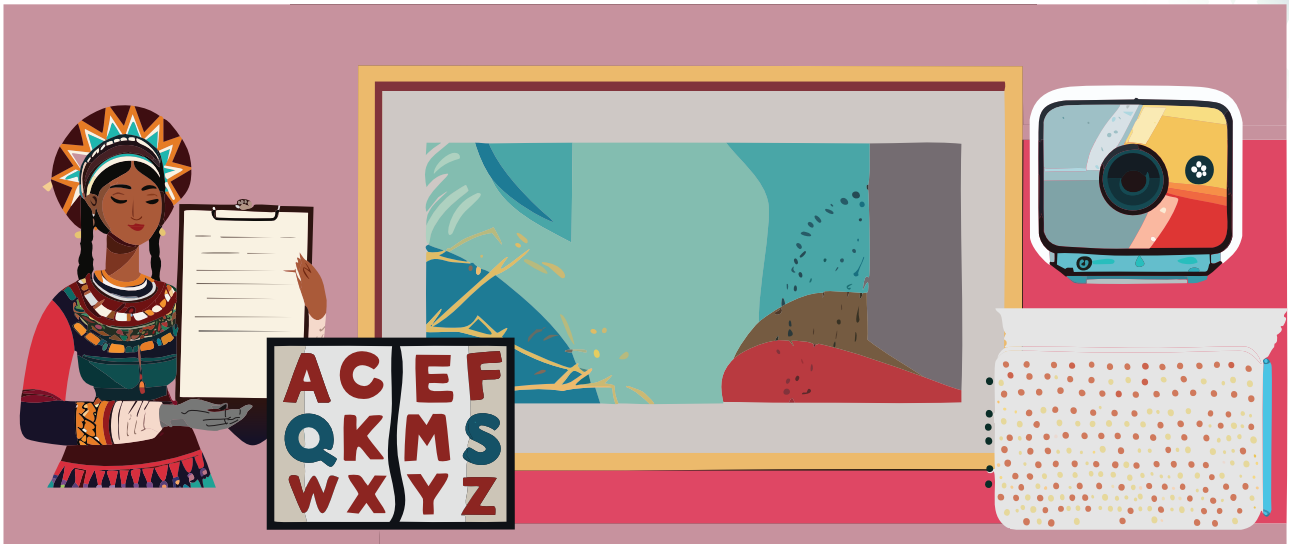


Section 3 : How to use the accessible Handbook



A.) Role and Resources:

- Facilitators: The facilitator should be person with and without disabilities who play a role in disabilities organizations or government sectors.
- Resources persons or representative:
 - o Representative from National Social Assistance Fund (NSAF).
 - o Representative from National Committee Disaster Management (NCDM): they would be an ideal human resource whom are working on DRR.
 - o Ministry of Social Affairs, Veterans and Youth Rehabilitation.



B.) Materials:

- Handout: should be documents, books, leaflet, flip chat, whiteboard, marker, etc.
- Videos about good practices from nearby country which is in the similar disaster situation to Cambodia.
- Large font (if participants with low visual impairment)
- Braille (provided for people with visual impairments)
- Picture (for participants with intellectual disabilities)

Target Participants

- Vulnerable group of people: people with disabilities, elderly, infant and pregnancy.
- Community officers, neighborhoods and family having disabilities members
- Prioritize to the location might have disaster about to happen.
- Local Disabled People Organization (DPO): they are considered as the skillful resource on disabilities advocacy; they would raise the special needs and challenges of PWDs are facing.



Framework of Training

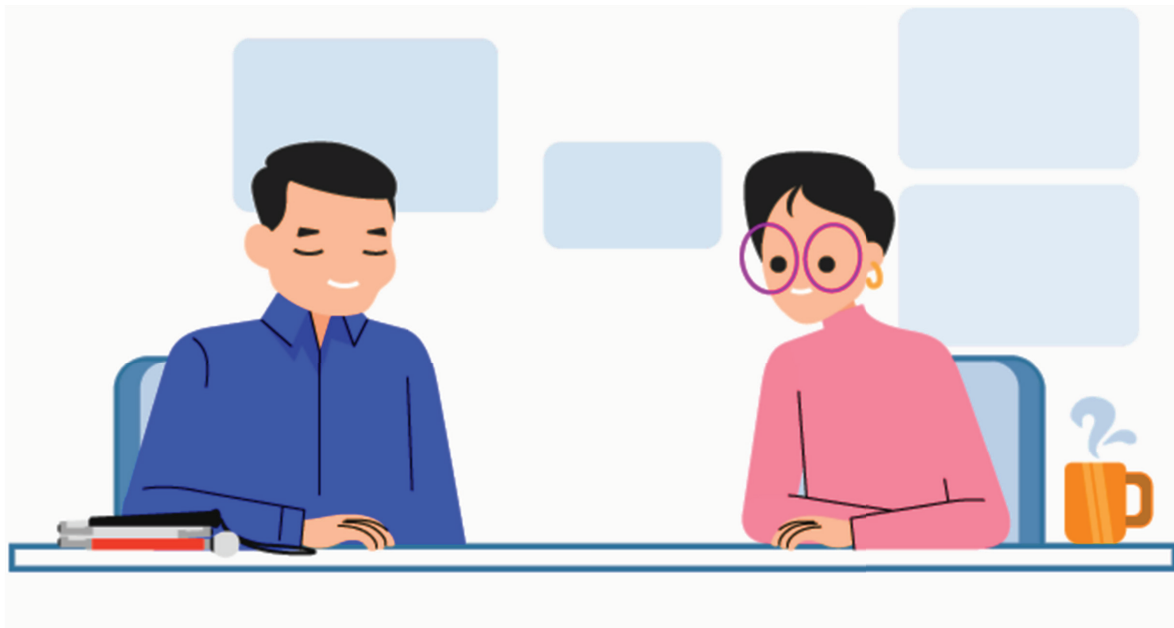
The training supposed to conduct in 2 days training which will be held during Jan – Mar 2024 with the following timeframe:

Time	Objectives	Key contents	Materials/ Handouts	Evaluation Process	Evaluation Tools	Remarks
Half day	To provide the knowledge and good practices and to learn from them.	Sharing session about DiDRR and the site training at Thailand in February and July 2023.	Documents, Videos on good practices from ASEAN Country, and tools received from APCD	N/A	N/A	
Full day	<ul style="list-style-type: none"> - To ensure DRR and DiDRR are linked - To raise the need of PWDs with inclusiveness & accessibility 	<ul style="list-style-type: none"> - DRR knowledge connected to DiDRR - Disability inclusion: type of disabilities, challenging, the need of PWDs, and providing accessibility 	Documents and tools received from APCD	Pre and post evaluation	Pre and post evaluation form	
Full day	To provide the PWDs to realize where they can find the resources/ social support.	Introductory to: <ul style="list-style-type: none"> - Social protection to PWDs: National Policy provided to PWDs 	Documents	N/A	N/A	

The UN ESCAP's E-Learning Tool, "It is Our Responsibility," focuses on incorporating disability perspectives to all phases of Disaster Risk Reduction (DRR). It promotes awareness of Disability-Inclusive Disaster Risk Reduction (DiDRR) and urges the involvement of the whole society for the benefit of all. Over the 7 modules, the course offers fresh insights on disability and provides actionable recommendations for inclusive DRR practices. The tool targets DRR policy makers and professionals at all levels to develop and implement disability-inclusive policies with the meaningful participation of organizations of persons with disabilities. Course takers will receive an ESCAP certificate.



Thumbnail of DiDRR E-Learning Tool



Characters Monthian (left) and Keiko (right) from the DiDRR E-Learning Tool

MODULE 2: THE SOCIAL MODEL AND BARRIERS

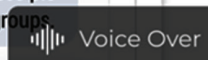


Keiko

Monthian, in the previous module, you mentioned that DiDRR helps a lot more people than we would think.

As DRR policy makers, we have to plan for everybody in society, but we have very limited budget. Persons with disabilities are just one slice of the pie. If we give more pie to persons with disabilities, that is less pie for children, women, indigenous groups, older persons, and all the other social groups.

Monthian



Voice Over

Screenshot of Module 2 of the DiDRR E-Learning Tool showing characters Monthian (left) and Keiko (right), as well as accessibility features of the tool, which includes voice over functionality.

Cambodia



Disability-Inclusive Disaster Risk Reduction (DiDRR) Handbook

Asia-Pacific Development Center on Disability
255 Rajvithi Rd., Rajthevi, Bangkok 10400 Thailand
Tel: +66-(0)-2354-7505 | Fax: +66-(0)-2354-7507
Email: info@apcdfoudnation.org
Website: www.apcdfoundation.org



Inclusive Tools Training



Disaster



Warning Sign



Training



Safe



Quick Exit



Risk Reduction